

# Plafonnier T5

## T5 Troffer LED Light

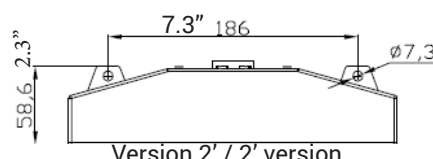
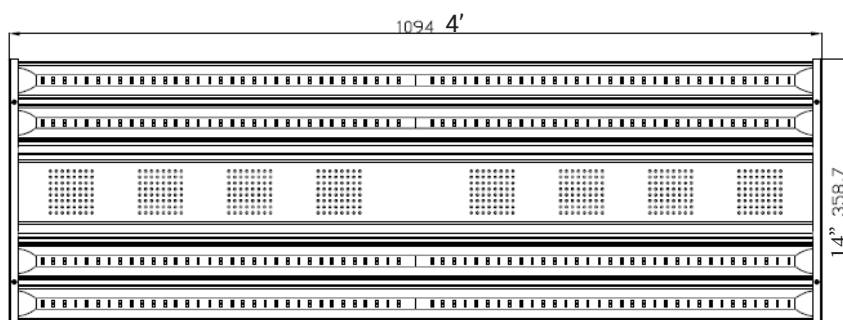
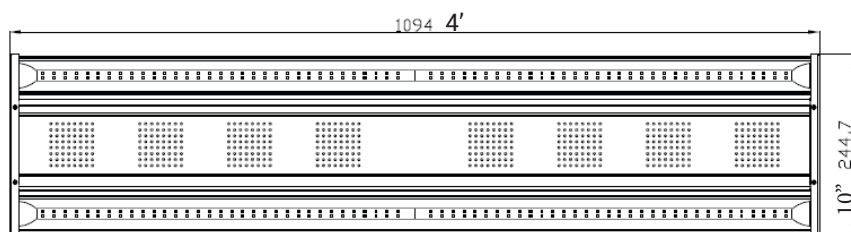
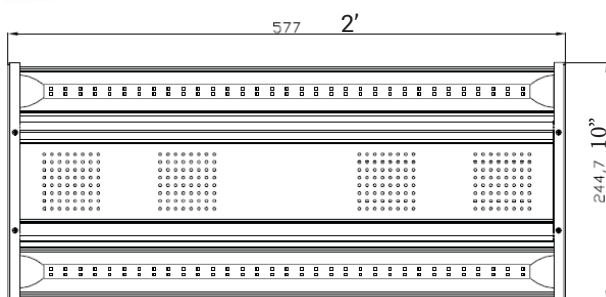
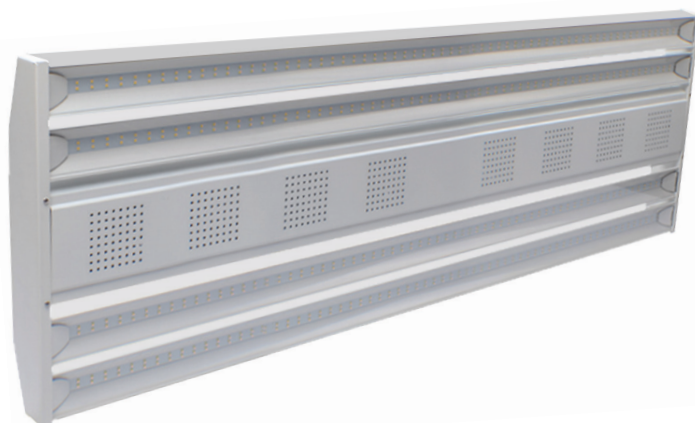
### Features

- Jusqu'à 130lm/W d'efficacité lumineuse
- Qualifié DLC
- Choix de puissances de 80W à 300W
- Driver HLG de Meanwell
- Disponible en longueurs de 2' et 4'
- Angle de faisceau de 120°
- Capteurs de présence et de lumière de jour en option
- Dimming DALI
- Côte IP40
- Température de fonctionnement: -40°C to +50°C
- Up to 130lm/W luminous efficiency
- DLC qualified
- 80W - 300W options
- Meanwell HLG driver
- Available in 2' and 4' long
- 120° beam angle
- Optional occupancy sensor, daylight sensor, DALI dimming
- IP40 rating
- Operating temperature: -40°C to +50°C

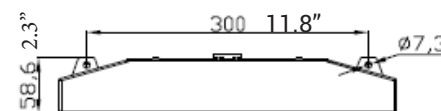


### Détails techniques / Technical data

Boîtier / Housing	Aluminum
Lentille / Lens	Polycarbonate diffus (blanc ou clair) Diffused polycarbonate (white or clear)
CRI	>80
CCT	4000/5000/5700
Alimentation / Input Voltage	100-277VAC 50/60Hz
Angle	120°
Montage / Mounting	Suspended / flush-mount



Version 2' / 2' version



Version 4' / 4' version

### Specifications

Modèle / Model	Dimensions	Puissance / Power	Flux lumineux / Luminous Flux (lm)	Poids / Weight (kg/lb)
ELS-T5T0802xx	2' x 10" x 2.3"	80W	10,400	2.5/5.5
ELS-T5T1002xx	2' x 10" x 2.3"	100W	13,000	2.5/5.5
ELS-T5T1004xx	4' x 10" x 2.3"	100W	13,000	4.8/10.6
ELS-T5T1204xx	4' x 10" x 2.3"	120W	15,600	4.8/10.6
ELS-T5T1504xx	4' x 10" x 2.3"	150W	19,500	4.9/10.8
ELS-T5T2004xx	4' x 10" x 2.3"	200W	26,000	5.0/11.0
ELS-T5T2404xx	4' x 14" x 2.3"	240W	31,200	6.7/14.8
ELS-T5T3004xx	4' x 14" x 2.3"	300W	39,000	6.7/14.8